

---

001

\_\_\_\_\_

\_\_\_\_\_

	.....	1
1	.....	1
1.1	.....	1
1.2	.....	1
1.3	.....	3
1.4	.....	3
1.5	.....	4
1.6	.....	6
1.7	.....	6
2	.....	10
2.1	.....	10
2.2	.....	27
2.3	.....	30
2.4	.....	32
2.5	.....	32
2.6	.....	42
3	.....	43
3.1	.....	43
3.2	.....	43
3.3	.....	48
3.4	.....	49
4	.....	54
4.1	.....	54
4.2	.....	61
4.3	.....	66
5	.....	67
5.1	.....	67
5.2	.....	67

5.3	.....	70
5.4	.....	71
6	.....	73
6.1	.....	73
6.2	.....	74
6.3	.....	75
6.4	.....	79
6.5	.....	80
6.6	.....	81
6.7	.....	83
7	.....	86
7.1	.....	86
7.2	.....	87
8	.....	89
8.1	.....	89
8.2	.....	90
8.3	.....	90
8.4	.....	91
8.5	.....	92
8.6	.....	92
8.7	.....	92
8.8	.....	92
9	.....	93
9.1	.....	93
9.2	.....	94
10	.....	97
10.1	.....	97
10.2	.....	97
11	.....	98

11.1	.....	98
11.2	.....	98
11.3	.....	98
11.4	.....	98
11.5	.....	99
12	.....	100
12.1	.....	100
12.2	.....	100
13	.....	101
	.....	102
1	.....	103
2	.....	116
3	.....	139
4	.....	148
5	.....	154
6	.....	162
7	.....	166

1  
2  
3  
4  
5  
6  
7  
8

1  
2  
3  
4  
5  
6  
7  
8  
9  
10

5km

2015 4

1  
2  
3  
4  
5  
6  
7  
8  
9  
10

11  
12  
13  
14  
15  
16  
17  
18  
19

1  
2  
3  
4  
5  
6  
7  
8  
9  
10  
11  
12  
13  
14  
15  
16  
17  
18

1

2

3

4

5

6

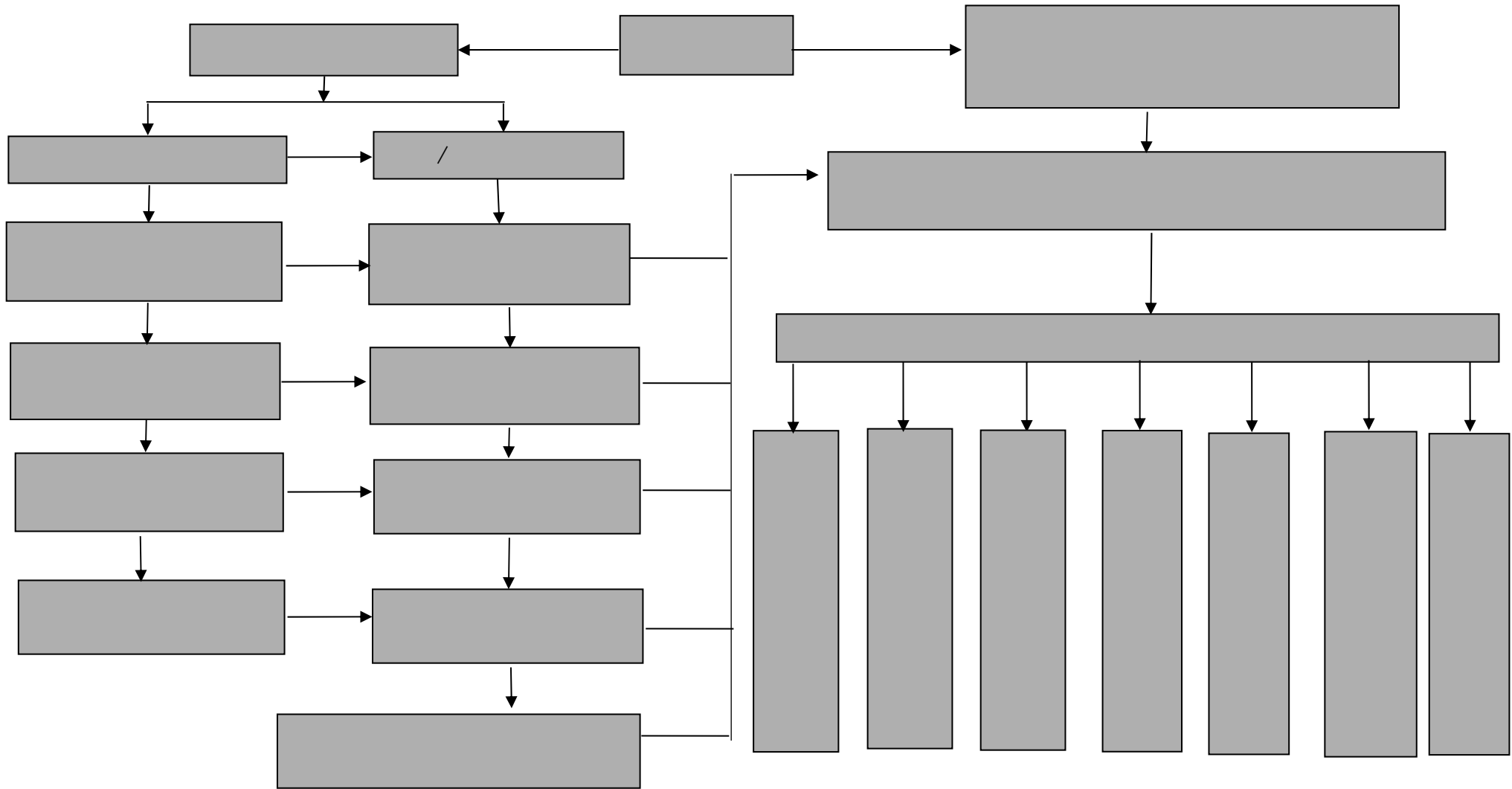
7

8

9 ( )

4

1.5-1



1.5-1

1

2

3

4

( 1-2 )

“ ”

2

3

7

1		10	30		50	100
---	--	----	----	--	----	-----

2			1	5		
---	--	--	---	---	--	--

3			2000		1	
---	--	--	------	--	---	--

4

5

6						3
---	--	--	--	--	--	---

10

7

( )

1		3	10		10	50
---	--	---	----	--	----	----

2			5000	1		
---	--	--	------	---	--	--

3			500		2000	
---	--	--	-----	--	------	--

4

5

6						10
---	--	--	--	--	--	----

7

1	3	10
2		5000
3		500
4		
5		

6

“ ” “ ”

1. 7- 1

1.7-1


50

2.1-1

			91340600MA2W30QU 70
			235000
			13966129619
	9		
	116 550479° E	33 608758° N	
			200
	70000		
			2020 8 6
	50		
	179333 3m <sup>2</sup>		

本部分内容涉密

本部分内容涉密

本部分内容涉密

---

116°23' 117°02' 33°16' 34°14'

1

22.5 32.5m  
220m

4.7%

27.7~28.2m

5

9

17

47

---

		14~17		20.8
9.6	40.3	-23.2		904cm
1481cm	560cm	15cm	20mm	210

1

493.5m<sup>3</sup>/a

1/2      1/4

22

6

8415.2 m<sup>3</sup>

4.7km

5.3km

25km<sup>2</sup>

3.2km

44km<sup>2</sup>

4.7km

51km<sup>2</sup>

0.9km

51km<sup>2</sup>

25m    5m

---

2

4.16 5.04 t/h 15 25  
t/(a·km<sup>2</sup>) 2.6 3.4 t/h  
1.56 1.64 t/h

2.3-1

						/m	
			25 /80	2012	GB3095-	NW	3017
			30 /120			NW	2448
			50 /180			NW	2420
			40 /180			NW	2474
			45 /160			NW	1634
			20 /70			NW	1485
			80 /400			NW	1242
			30 /105			N	1989
			73 /295			NE	2566
			113 /395			NE	2033
			40 /147			W	1975
			30 /110			W	1375
			40 /174			W	1405
			87 /304			W	961
			40 /140			W	2171
			80 /280			SSW	2034
			124 /434			SSW	1053
			35 /127			SSW	1970
			45 /157	S	2206		

		125 /270		SSE	2410
		20 /70		SSE	2519
		82 /287		SSE	2438
		1000		NE	4700
1000m					
		100	2012	GB3095-	W 490m
		150	2012	GB3095-	W 850m
	/		2002	GB3838-	N 8130
	/		2002	GB3838-	N 930
	/		2002	GB3838-	W 210
	/		2017 III	GB/T14848-	/

2.4-1

2.4-1

		CCD LAS	
		CCD LAS	“ + +
		CCD SS	+ + +
			+MR' 300 <sup>3</sup> /d

本部分内容涉密


B'

A

2.5-2

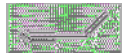
2.5-2

		CAS	g/t	Q/t	Q
1		106-99-0	2721.2	10	272.12
2		107-13-1	813.32	10	81.332
3		79-41-4	479	/	/
4	20%	1336-21-6	166.6 33.32	10	3.32
5		1310-73-2	800	/	/
6		27176-87-0	500	5	100
7		/	1	2500	0.0004

		1, 3		1, 3-butadiene vinyl ethylene	
	CH		54.10	CAS	106-99-0
					
GB		1		1B	1A



	LD50 5480ng/kg( ) 3210 ng/kg( )
	LC50 285000ng/m <sup>3</sup> ( 4h) 259ppm( 7h)
	LC50 25ng/L( 96h) 50ng/L( 96h) 21ng/L( 96h) 22ng/L( 96h)
	h 1200-48000 h Q 76 7.8
	KOW
	KOC

	[ ]		acrylonitrile(inhibited)
	CHN	53 1	CAS 107-13-1 

GHS	2 - 3 - 3 - / 2 / 1 1 — 3 2 - 2 - 2



	LD50 78ng/kg( ) 27 ng/kg( ) 148 ng/kg( ) 63ng/kg( )
	LC50 333ppm( 4h)
	LC50 11.8ng/L( 48h) 2.6ng/L( 30d) 10.1ng/L( 96h) 13ng/L( 24h) 7.6 ng/L( 48h)
	28d 0% OECD01C 28d 14.7%
	nm 203 h 1.06x 10 <sup>7</sup> h 13.4 189
	48h BCF 48
	KOC

					Ammonia water
	NH <sub>3</sub>	35.06	CAS	1336-21-6	NH <sub>3</sub> HO

GH	/	1B	/	1
	3		-	1

					15min
					5 10min



--	--

	methacrylic acid	
CHO	86 09	CAS 79 41 4
81618		
15	161	1 1. 01
	MPa	1
KJ/mol	ml	kPa 1. 33
		60 6
68		
400		
	LD50 1600ng/kg	500ng/kg
		15 15
	20 UN	2531

	82001
--	-------

	Sodium hydroxide Caustic soda Sodium			UN 1823	
	hydrate				
	NaOH	40.01		CAS	1310-73-2
	318.4	( =1)	2.12	( =1)	/
	1390	kPa		0.13/39	

		Mpa	
		1	1
kpa		1	
		KJ·mol <sup>-1</sup>	
			76
		M	
	248	Mpa	


	[ ]	[ CAS ] 27176-87-0
	[ ] LINEAR ALKYL BENZENE SULFONIC ACID	[ ] C18H35O2S
	[ ] 326 49	[ RECS ]
	[ ]	[ UN ]
	[ ]	[ IMDG ]
	[ ]	[ ]
	[ ]	[ ]
	[ ( )]	[ (MPa)]
	[ (kJ/mol)]	[ ( )] 10
	[ ( )] 210	[ ] 1.2
	( ) 310	[ (V%)]
	[ ]	[ (kPa)]
	[ ]	[ ( )] 315
	[ ]	[ ]
	[ ]	[ ]
	[ ]	[ ]
	[ ]	[ ]
	[ ]	[ ]
	[ ]	[ ]
	[ ]	[ ]
	[ ]	[ ]
	[ ]	[ ]
	[ ]	[ ]

---

	[ ] / : : ;
--	----------------------

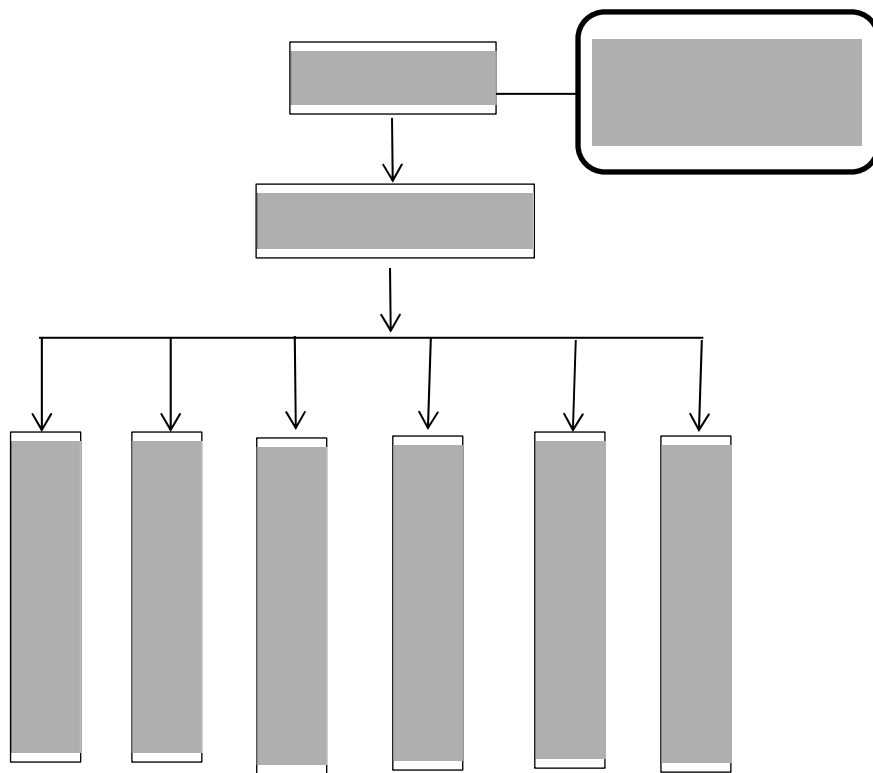
~~M~~-E2 + - ~~Q~~~~M~~-E3 ]

[ - ~~Q~~



3.2-1

3.2-1



3.2-1

3.2-1

			18290706628	
			13966129619	
			13966129619	
			15705303067 15057117569 13561606083 18196561727 15155539067 17356166505	

---

			13856186515	
			18895329601 15856143642	
			18098799292	
			17356101037 17709615152	
			15856161796	
			15256138221	
			15155539067	
			18715619616	

---

			17356166505	
			17364301921	
			15705303067	
			18055483170	
			15655160475	

---

3.3-1

3.3-1

	0561- 5255509
	0561- 3158119
	12345/0561- 12369
	110
	0561- 4953491
	120 110 119 122
	0561- 7012110
	12345/0561- 12369
	0561- 6076611
	0561- 6077361
	0561- 3118012
	0561- 6886263

---

	0561- 7889761
	0561- 7071690
	0561- 4986120
	0561- 7012577
	0561- 7519001    13909613893
	0561- 7519002    13305612168
	0561- 6075019
	0561- 3024838
	0561- 3228007
	0561- 7952019
	13962045957
	13770346779
	13851196977

1

2



1

2

3

1

2



1

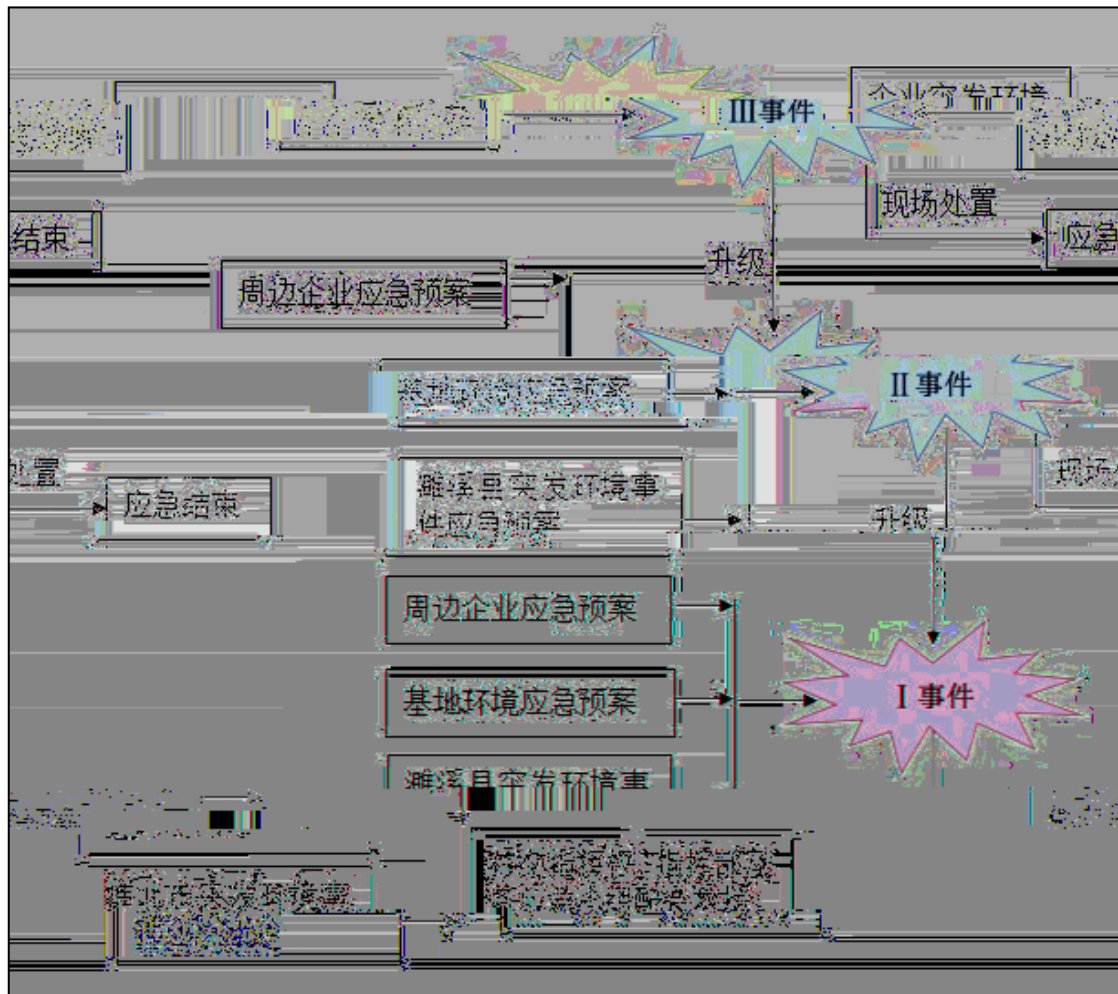
2

3

**3 4 3**

/





3.5-1

---

1

		DCS
		DCS
		ABC


2

DCS

1 4000m<sup>3</sup>

1 500m<sup>3</sup>

		× 2	2768.5	1107.4m <sup>3</sup>
			2	
		× 1	1133.15	906.52m <sup>3</sup>
			1	
		× 2	936	748.8m <sup>3</sup>
			2	

3

4

---

1  
2  
3  
4  
5  
6  
7

---

8

9

10

4.1-2

---


---

	1#	NMHC					
	2#	NMHC					
	3#	NMHC					

---

--	--	--	--	--	--	--	--

---

I II III

III

II

I

I

4 2 1

I	
II	

---

III	
-----	--

I

II

III

I	1 2                    I                    II I                    1.7 3 I	
II	1 2                    II                    III II                    1.7 3 II	
III	1	

---

	2 3 III	III 1.7

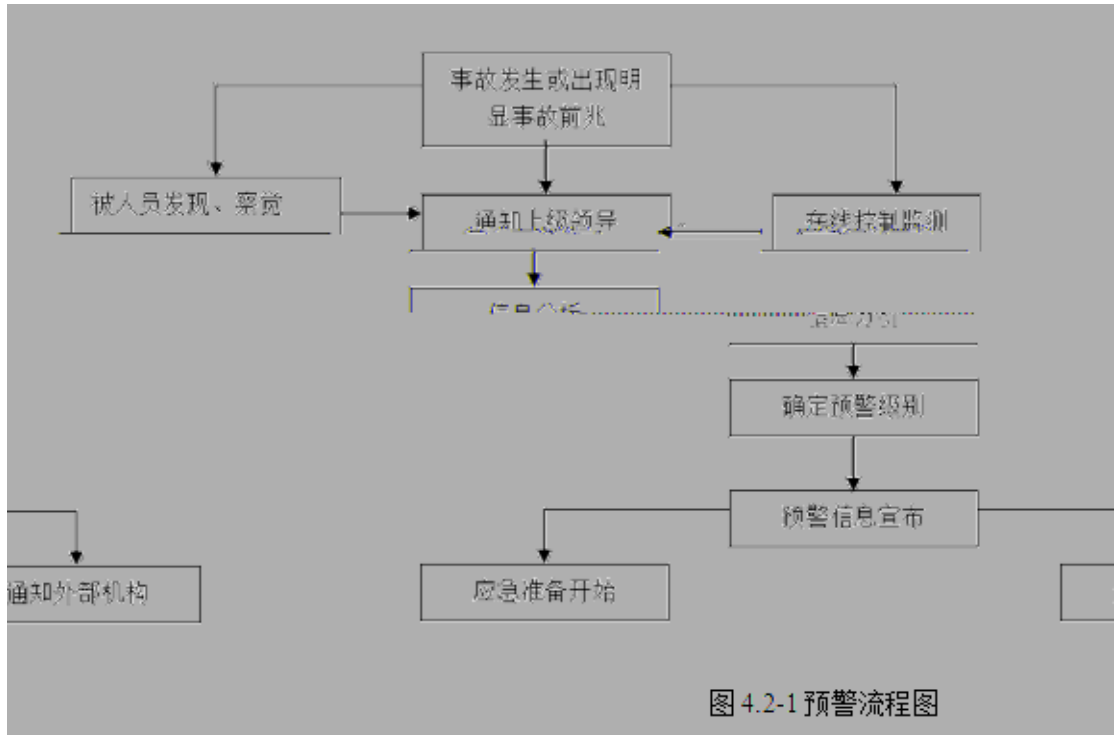
1

2

3

4

4.2-1



1

2

3

4

5

6

4 2 3

I	<p>1</p> <p>2</p> <p>3</p> <p>4</p> <p>5</p> <p>6</p> <p>7</p> <p>8</p> <p>9</p>
II	<p>1 24</p> <p>2</p> <p>3</p> <p>4</p> <p>5</p> <p>6</p> <p>7</p>
III	<p>1 24</p> <p>2</p> <p>3</p> <p>4</p> <p>5</p> <p>6</p> <p>7</p>



48

24

18290706628

18205619499

---

“

”

---

1

2

3 I

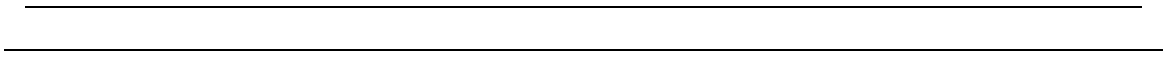
I

15

5.2-1

**5.2-1**

			1h		
,			30min		
I			15min		



	0561- 3228007 0561- 7952019 12345	I 15 II 30 III 60		
	13962045957 13770346779 13851196977			
	13909613893			
	0561- 4986120			

“ ”

	0561- 5255509
	0561- 3158119
	12345/0561- 12369
	110

	0561- 4953491
	120 110 119 122
	0561- 7012110
	12345/0561- 12369
	0561- 6076611
	0561- 6077361
	0561- 3118012
	0561- 6886263
	0561- 7889761
	0561- 7071690
	0561- 4986120
	0561- 7012577
	0561- 7519001    13909613893
	0561- 7519002    13305612168
	0561- 6075019
	0561- 3024838
	0561- 3228007
	0561- 7952019

**5 2 6**

	13605618836
	13705614868

13005617159

M 3

---

	13851196977
--	-------------

1

I 15

II 30

1



---

I

II

III

I

II

III

6.2-1

6.2-1

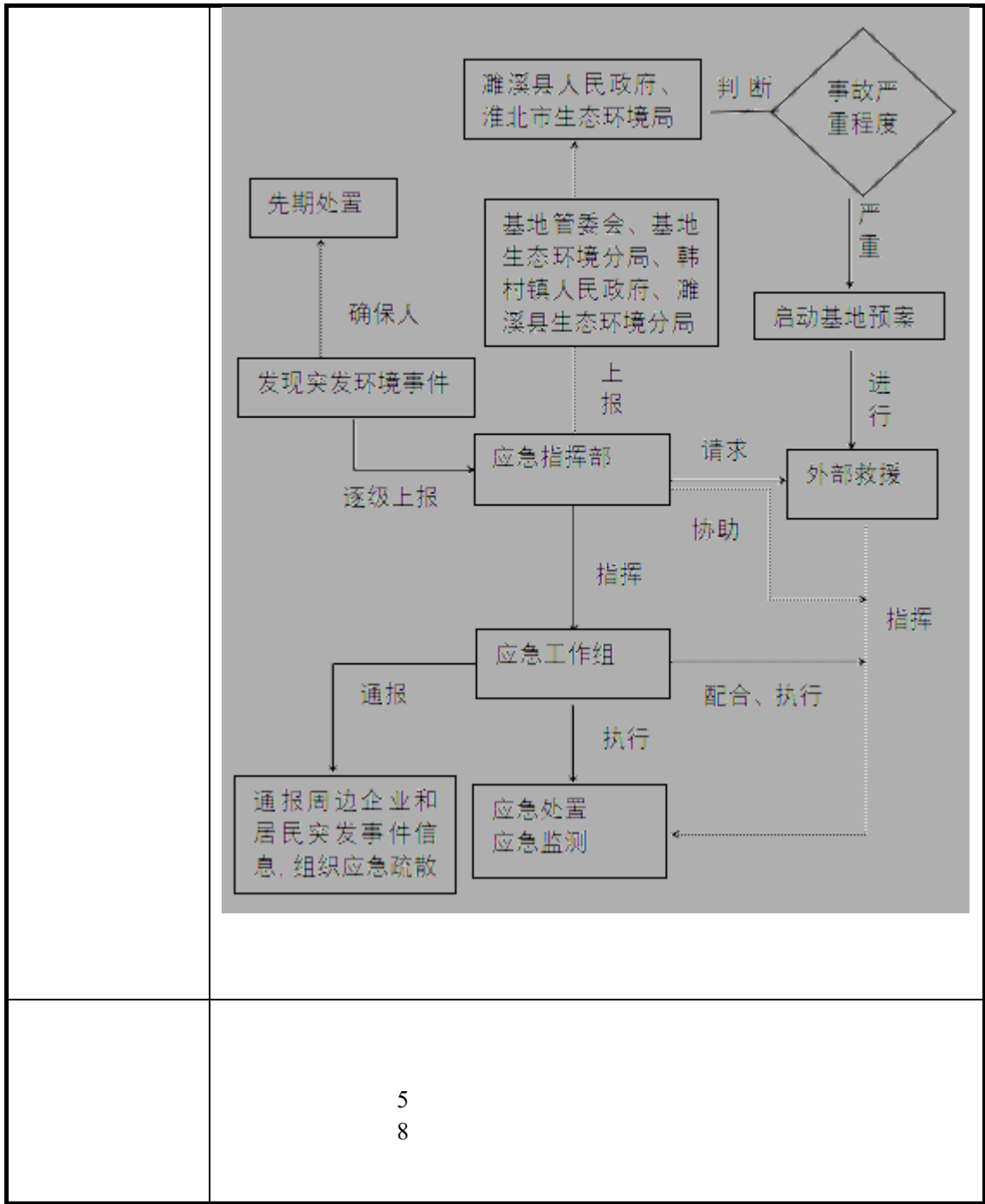
---

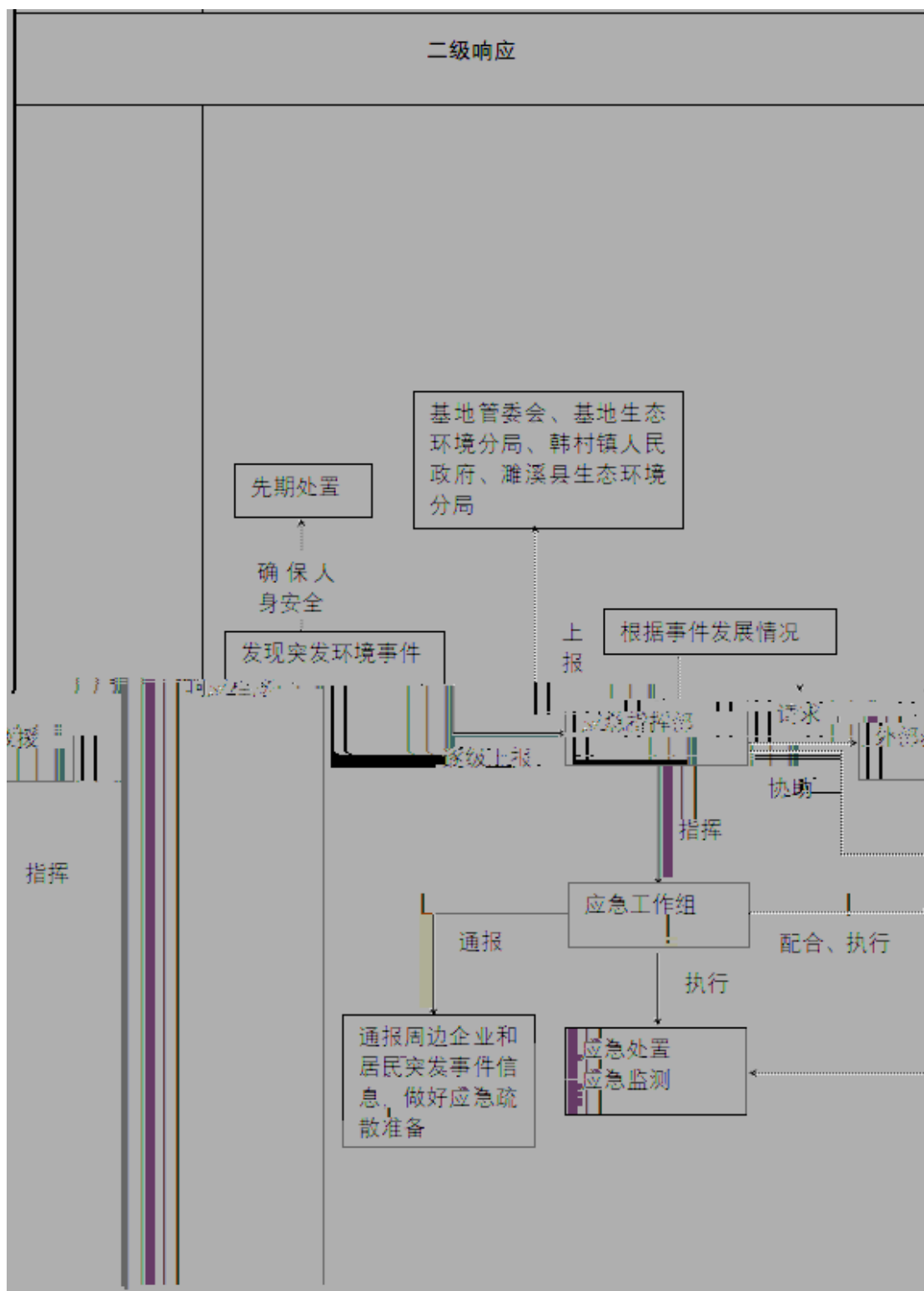

“ ”

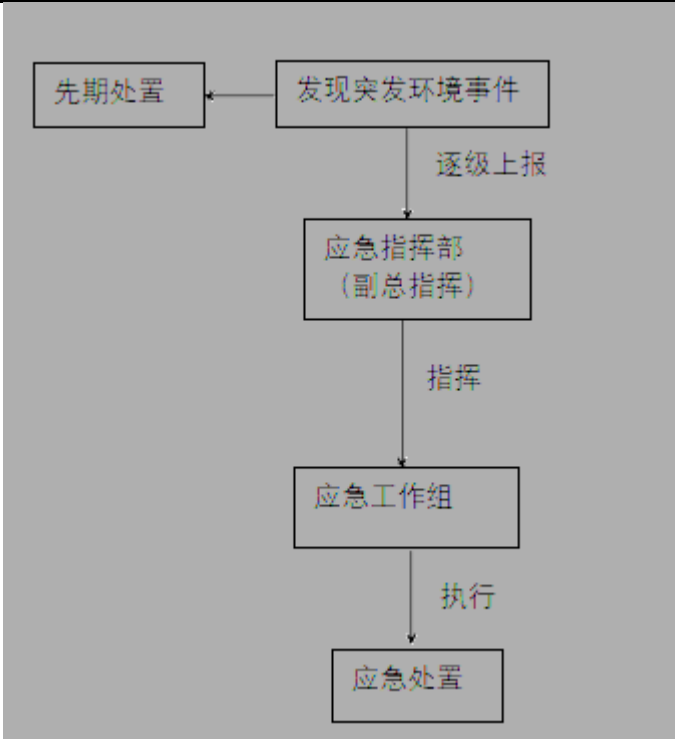
6.3-1

6.3-1







	 <pre> graph TD     A[发现突发环境事件] --&gt; B[先期处置]     A -- 逐级上报 --&gt; C[应急指挥部 (副总指挥)]     C -- 指挥 --&gt; D[应急工作组]     D -- 执行 --&gt; E[应急处置] </pre>
	<p style="text-align: center;">15</p> <p style="text-align: center;">10</p>

---

“ ”

1

1

2

119 120

2

1

2

3

1

500

2

2

3

1

2



3

4

4

5

24

6

1

2

3

---

4

5

1

2

3

4

“ ”

5

6

7

8

---

150

1

2

3

1

2

3

---

4

1

2

1

2

3

1

2

6.7-1 6.7-2

6.7-1

--	--	--	--	--

	NOx VOCs	1# 2# 3#	10 15 2h	HJ589- 2010
	NOx		10 15 2h	
			1 2h	

	pH COD SS NH3-N		10 15 2h	HJ589- 2010
			10 15 2h	
	COD SS		10 15 2h	

6.7-1 6.7-2

10 15

2h

1

30 60

---

6h      1                      24h                      1

6.7-3      6.7-4

6.7-3

	10 15 2h	
	1	
	3 /	

6.7-4

	10 15	
	2h      1	
	3 /	



- 1
- 2
- 3
- 4
- 5

- 1
- 2

- 3

- 1
- 2
- 3
- 4

---

5

6

7

8

9

**7.2**

---

,

8.1-1

8.1-1

			18290706628
			13966129619
			13966129619
			15705303067 15057117569 13561606083 18196561727 15155539067 17356166505
			13856186515
			18895329601
			15856143642
			18098799292
			17356101037 17709615152
			18205619499
			15256138221
			15155539067
			18715619616

---

			17356166505
			17364301921
			15705303067
			18055483170
			15655160475
			18715619616

		2		
		2		
		44		
		338		
		1		
		1		
		1		
		241		
		2768.5		
		1133.15		
		936		

8.3-2

		10		
		5		
		10		
		1000		
		20		
		5		
		2		
		2		

1

2

3

24

---

4

24

“ ”

9.1-1

9.1-1

1				
2				

---

3				
4				

9.2-1

9.2-1

		1 /
		1 /
		2 /

---

		2 /
		2 /



---

1

2

3

4

1

2

3

4

5

6

7

8

---

1

2

1

2

3

4

5

6

7

8

9

10

11

30



---

---

1

2

3

4

5

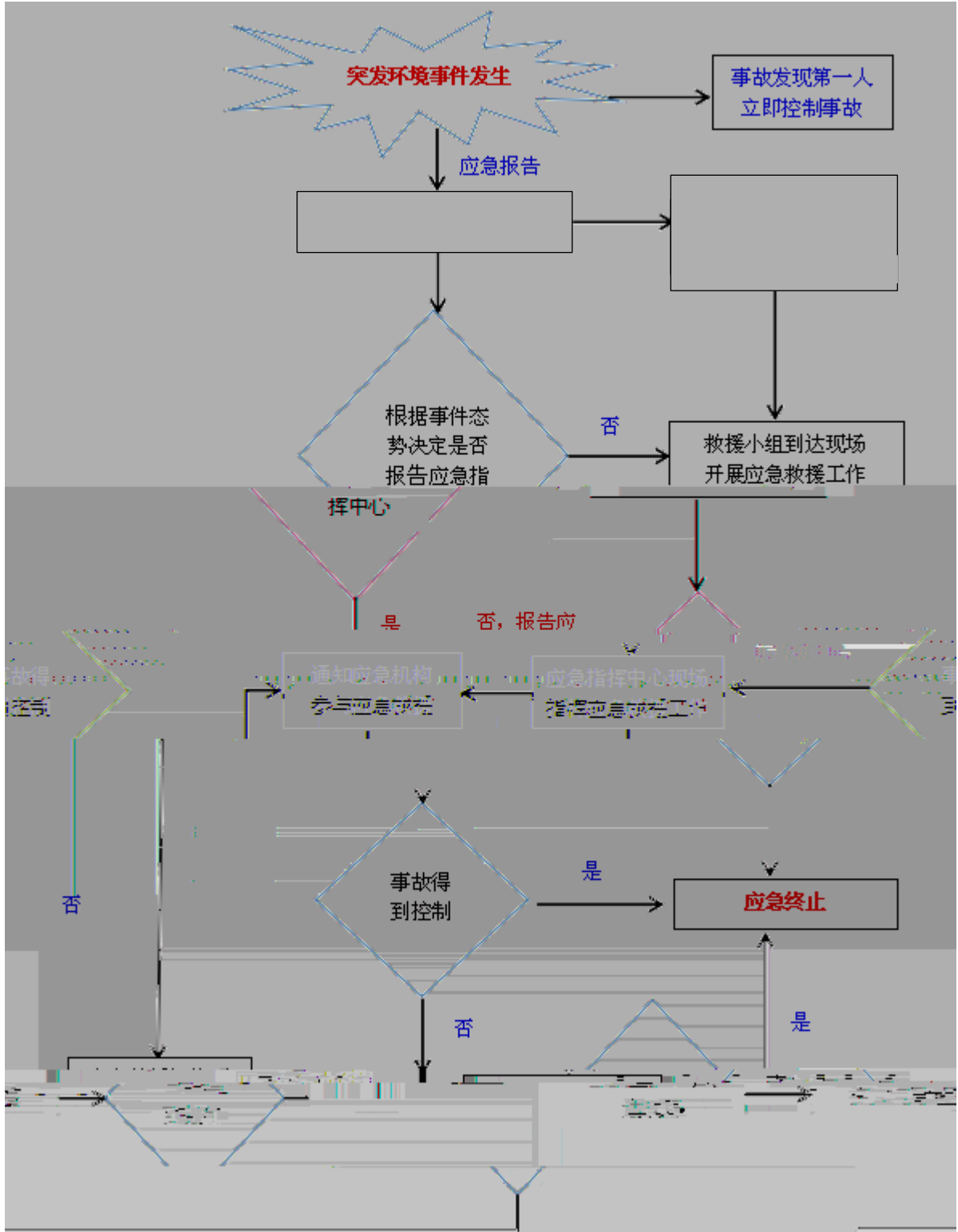
6

7

8

9

10



---

1 III

2 II

3 I

1

2

3

4

5

III

---

II

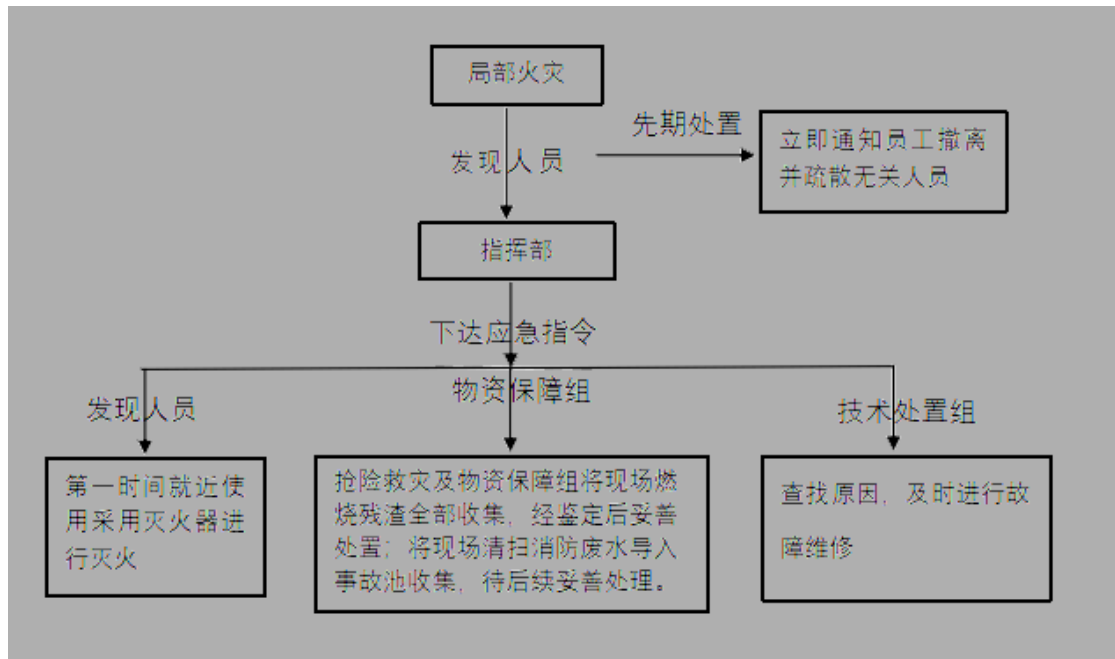
)

I

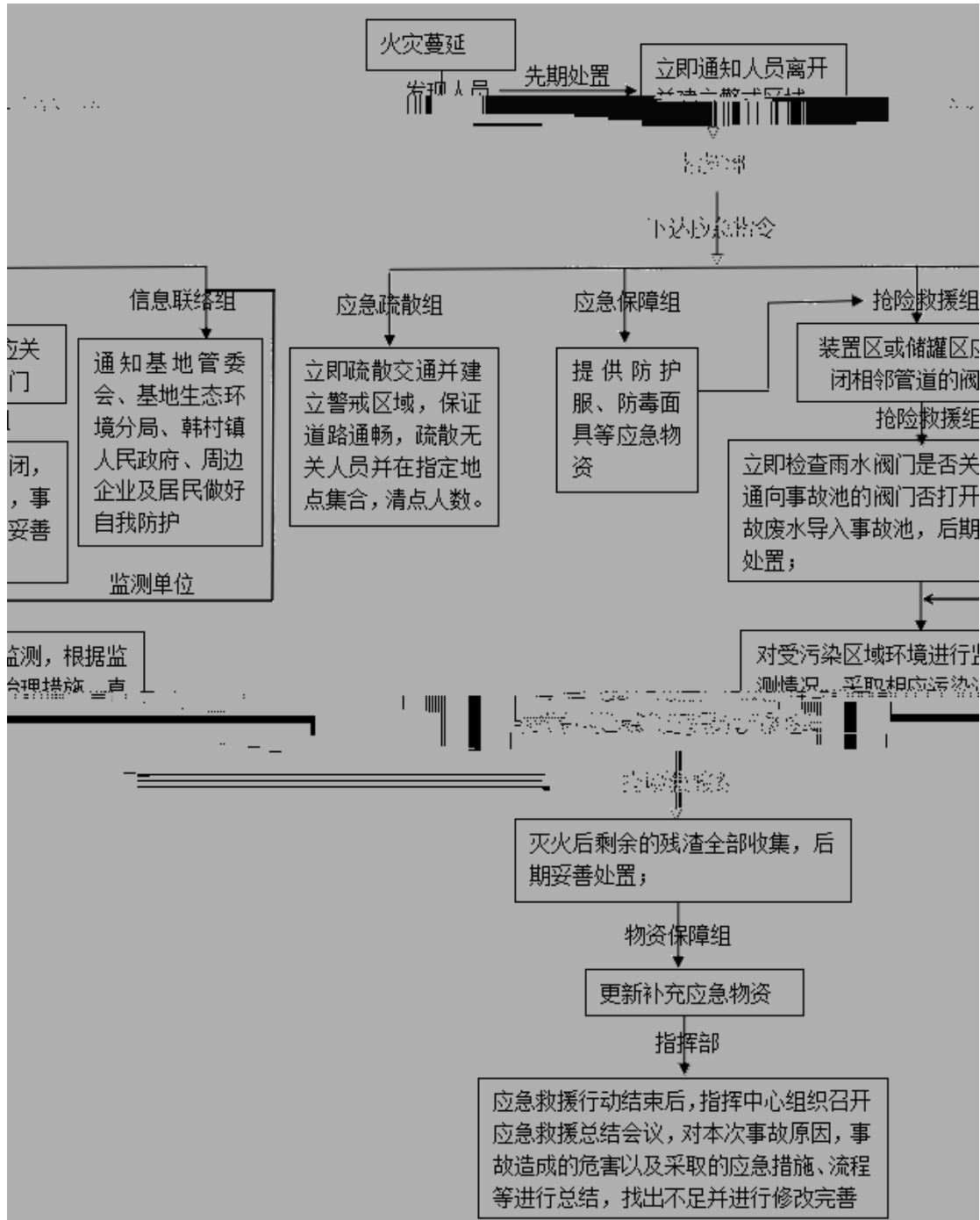
I

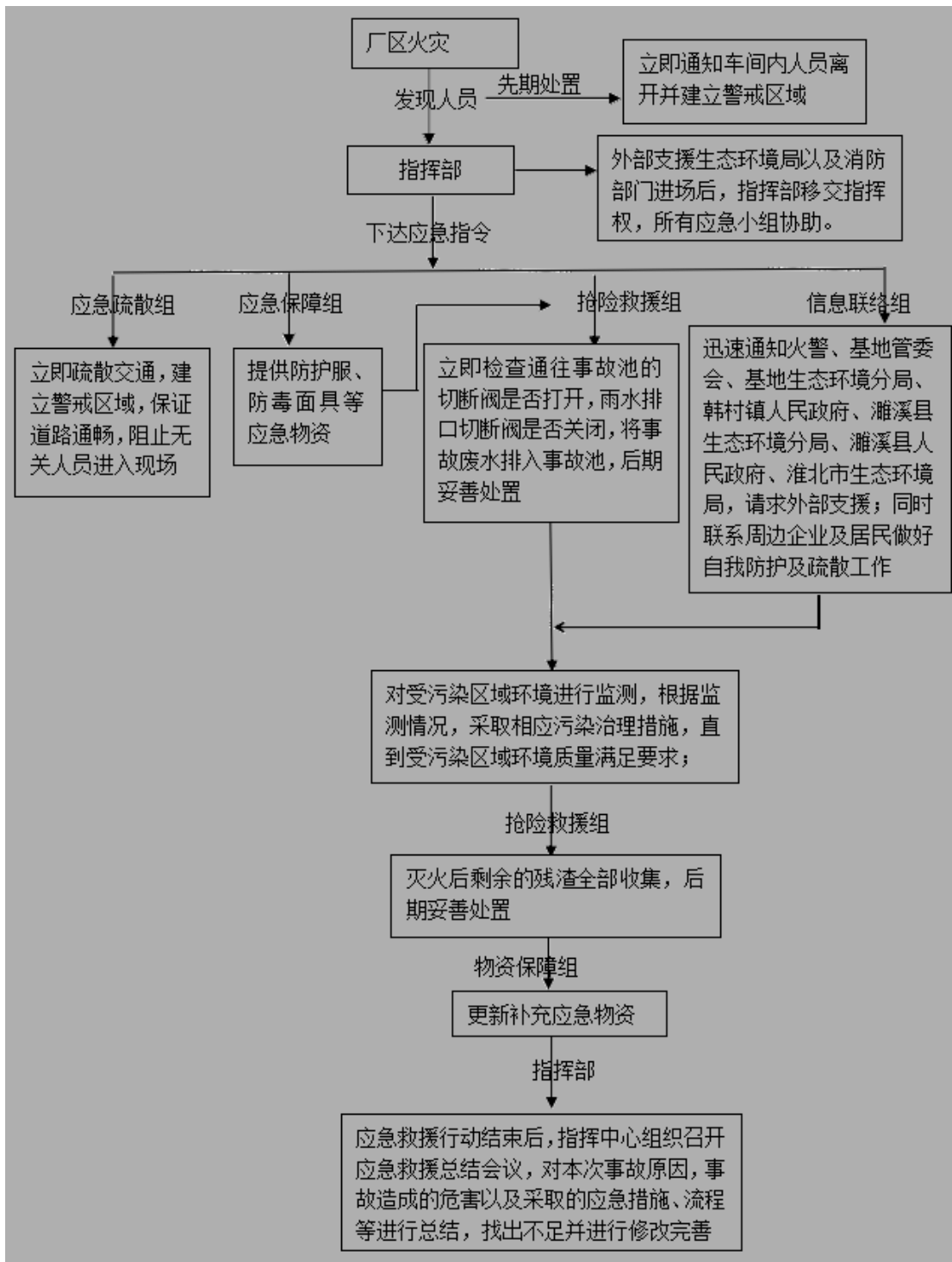


1 III

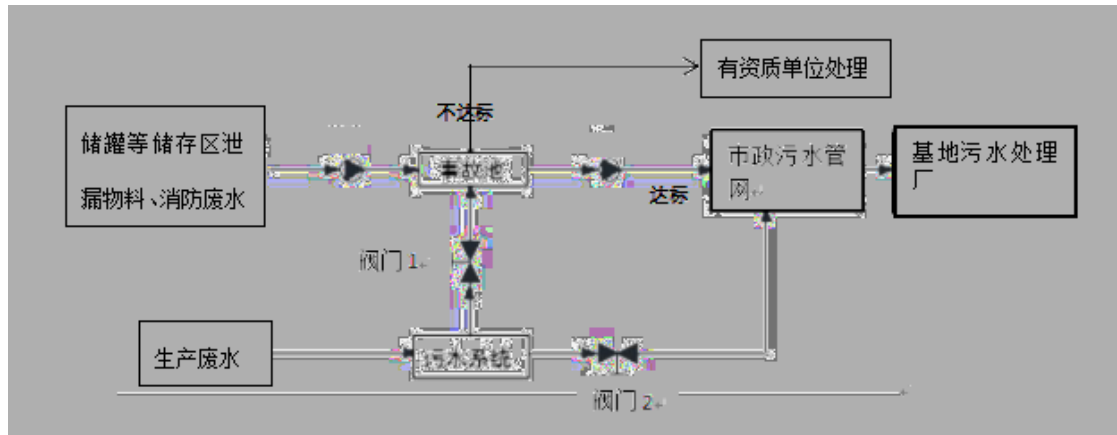


III





4



---

## 1. 4

1

		1	
		2	
		3	

III

		6	
		7	
		8	
		9	/
	1		
	2		
	3	120	
	4		
	5		

1

		1	
		2	
		1	
		2	
		3	
		4	
		5	
		6	

---

2

	II	1	
		2	
		3	
		4	
		5	
		6	
		7	
		8	
	1		
	2		
	3		
	4	120	
	5		

1


		1	
		2	
		1	
		2	
		3	
		4	
		5	
		6	

2

	II	1	
		2	
		3	
		4	
		5	
		6	
		7	
		8	/

---

	1		
	2		
	3	120	
	4		
	5		

	I	1	
		2	
		3	
		4	
		5	
		6	
		7	

		8	
		9	
		10	/
	1		
	2		
	3	120	
	4		
	5		

---

1 III

2 II

3 I

1

2

3

4

5

6

7

1 III



2 II

3 I



4

1 III



2 II

3 I



4

2 3 3

1 III

2 II



3 I

---

4

2 3 4

1 III

2 II

---

3 I

4

/

:

,

:

---

, ;

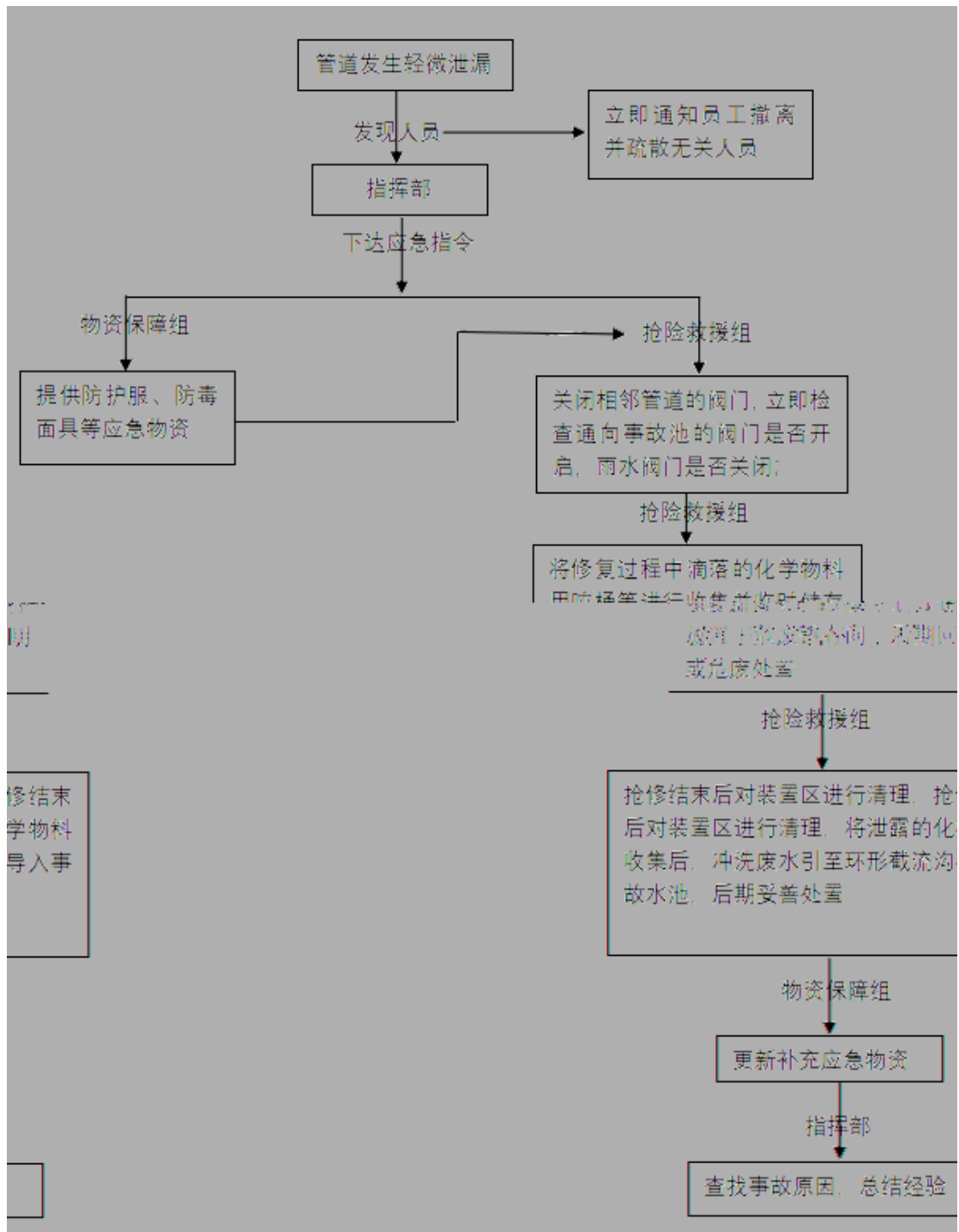
1 III

2 II

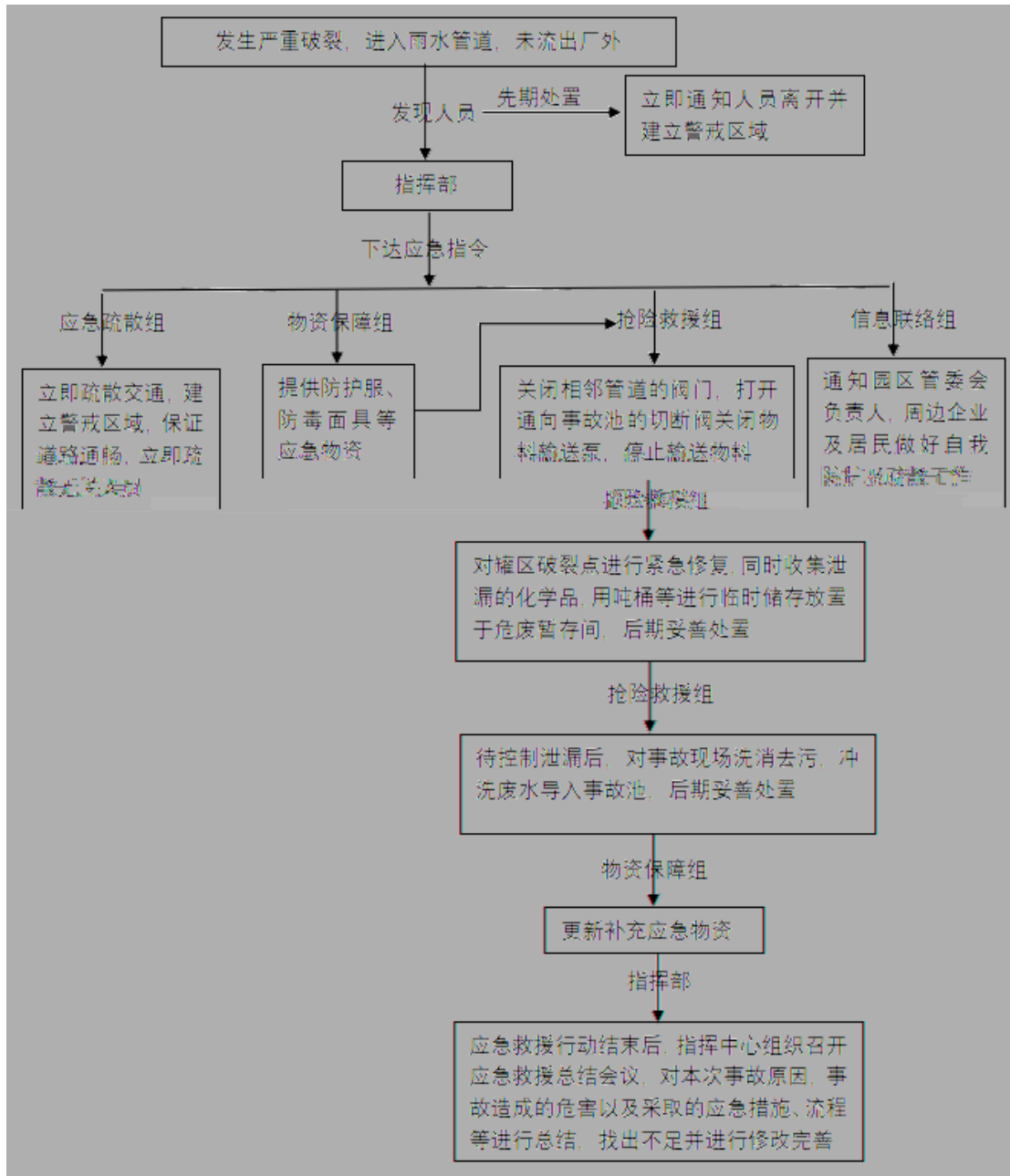
§



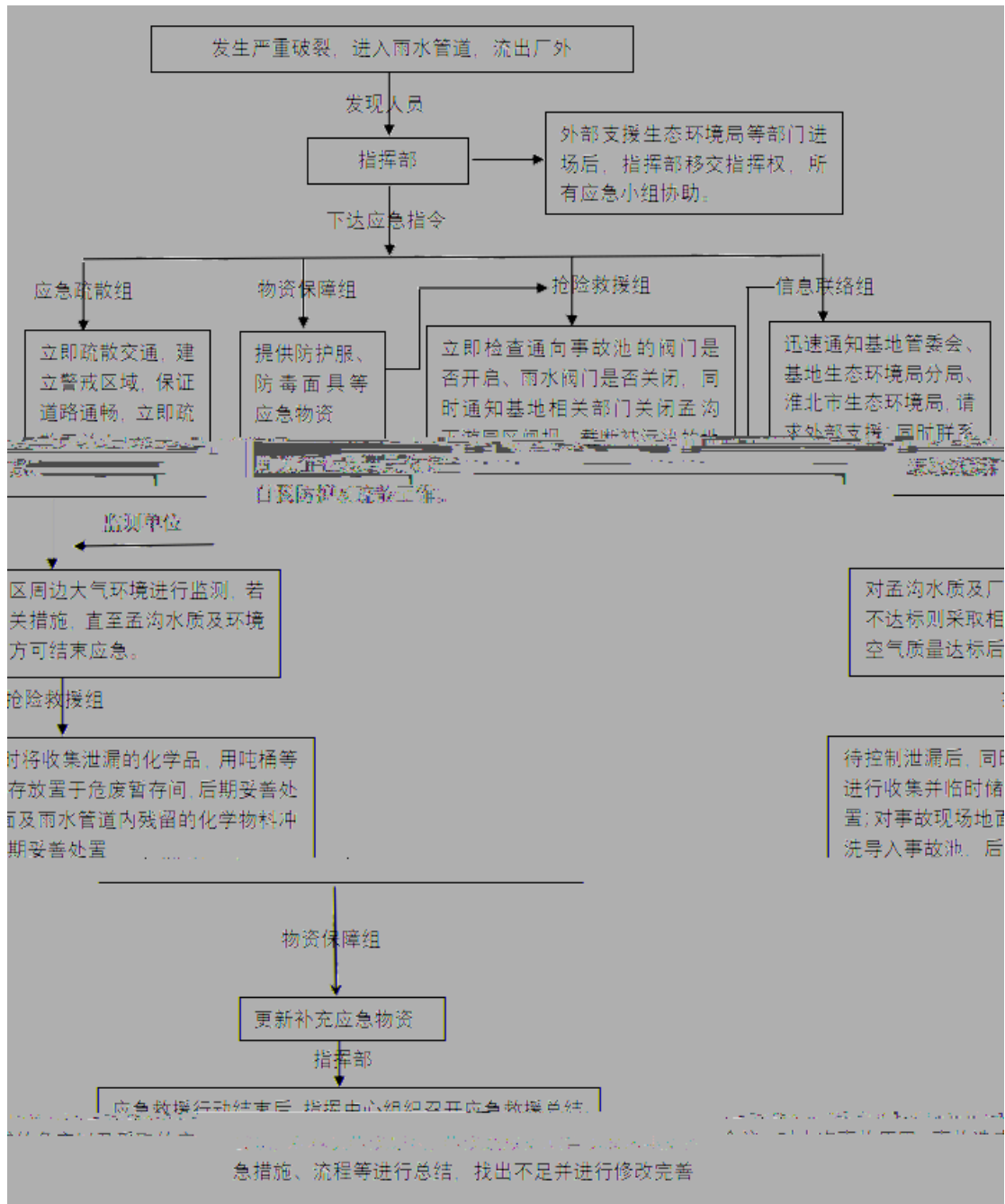
4



2 II



II





		4	
		5	
		6	
		7	
		8	/
	1		
	2		
	3	120	
	4		
	5		

3 I

		1	
		2	
		3	
		4	

		5	
		6	
		7	
		8	
		9	
		10	/
	1		
	2		
	3	120	
	4		
	5		

2.4.2

1

		1	
		2	
		3	

		4	
		5	
		6	
	1		
	2		
	120		
	3		

2

		1	
		2	
		3	
		4	
		5	
		6	
	7		
	8	/	
	1		
	2		
	3		

---

	120
	4
	5

3 I

		1	
		2	
		3	
		4	
		5	
		6	
		7	
		8	
		9	
		10	/
	1		

---

	2	
	3	120
	4	
	5	

2.4.3

1

		1		
		2		
		3		
		4		
		5		
6				
	1			
	2	120		
	3			

2


		1	
		2	
		3	
		4	
		5	
		6	
		7	/
	1		
	2		
	3	120	
	4		
	5		

3 I

		1	
		2	
		3	
		4	

		5	
		6	
		7	
		8	
		9	
		10	/
	1		
	2		
	3	120	
	4		
	5		

2.4.4

1

		1	

		2	
		3	
		4	
		5	
	1		
	2	120	
	3		

2

		1	
		2	
		3	
		4	
		5	
		6	
		7	/
	1		
	2		
	3		
	120		
	4		

---

	5
--	---

3 I

---

SCR

1 II

2 I

1

2

3

4

5

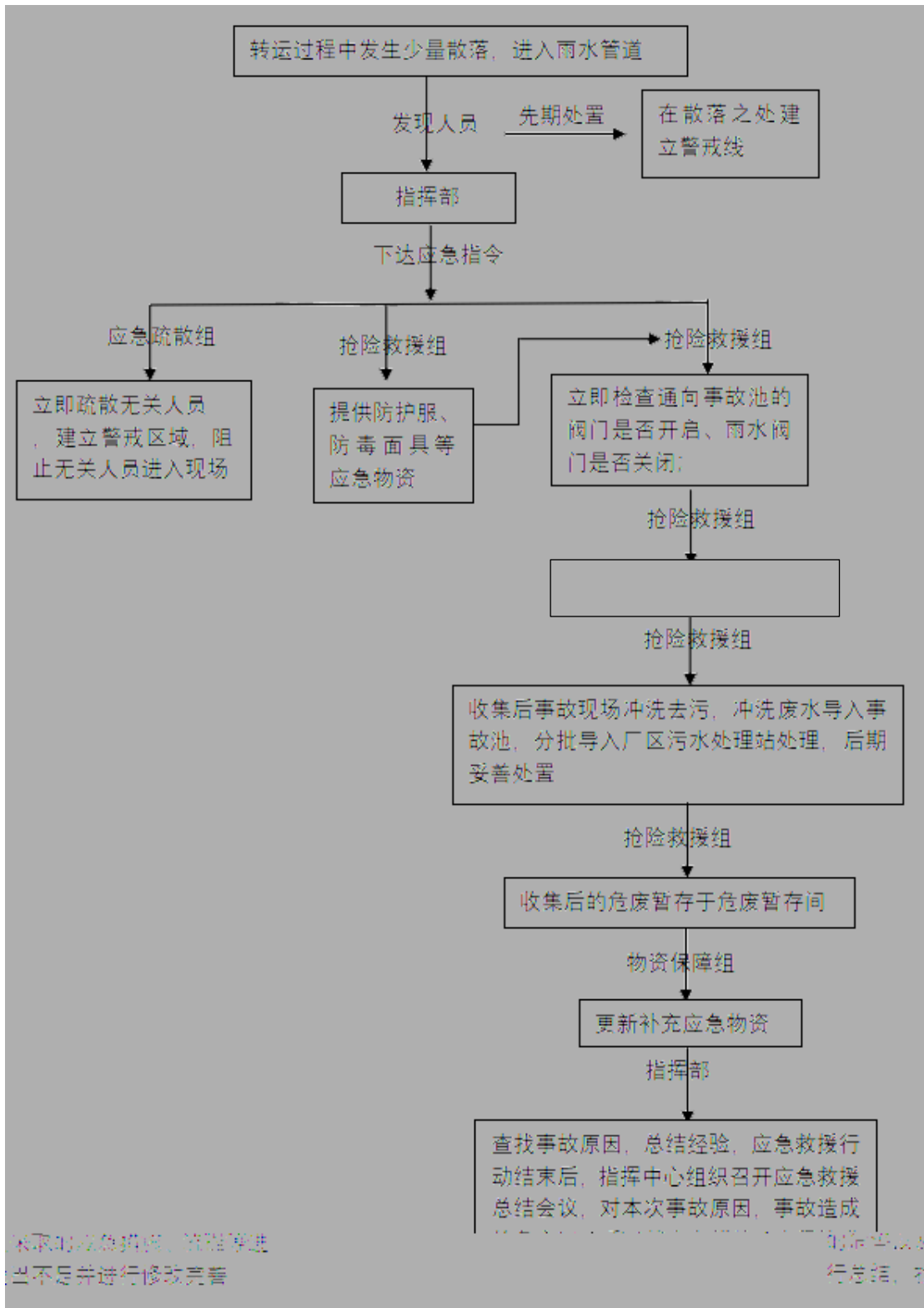
1 II

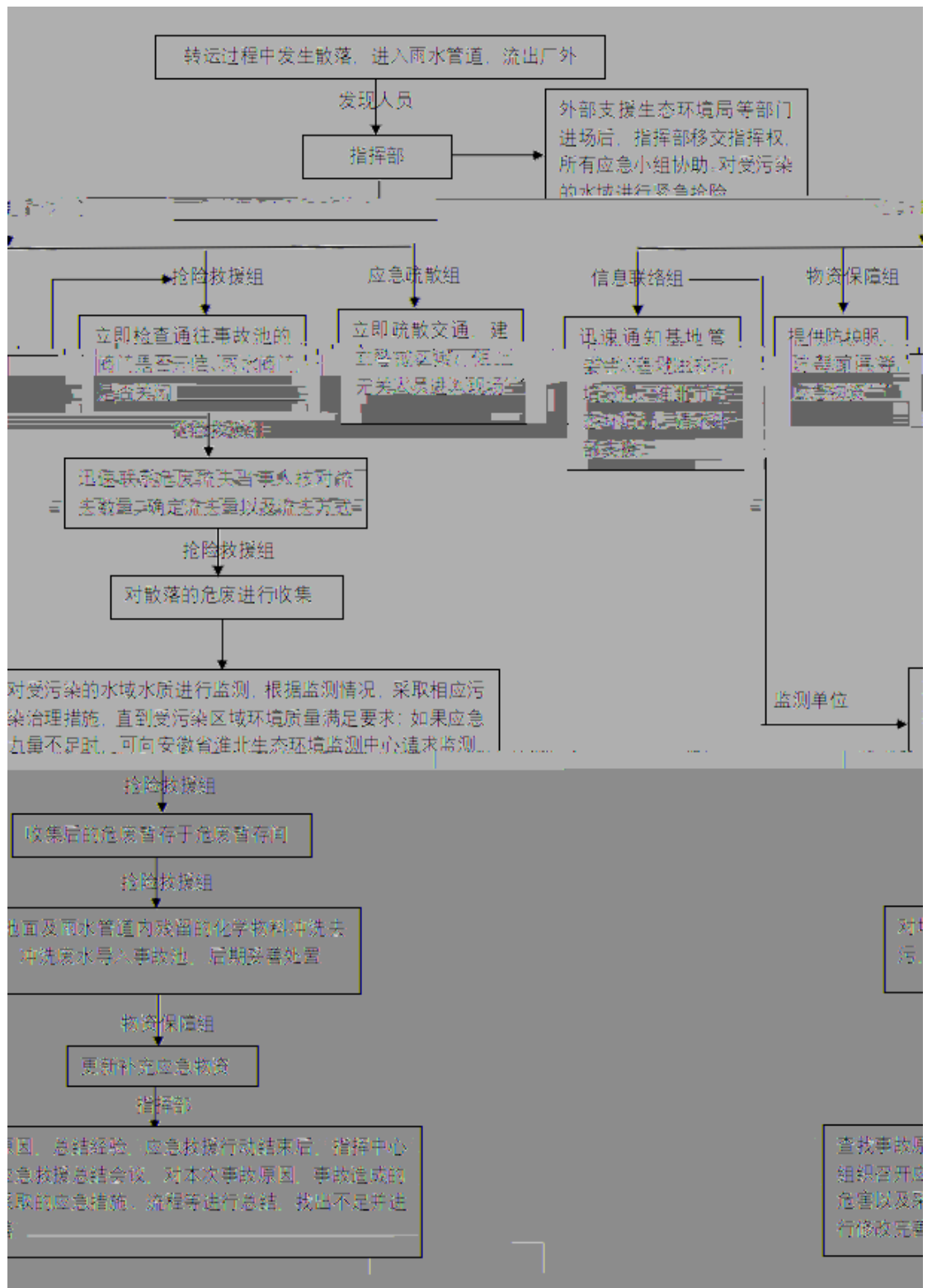
---

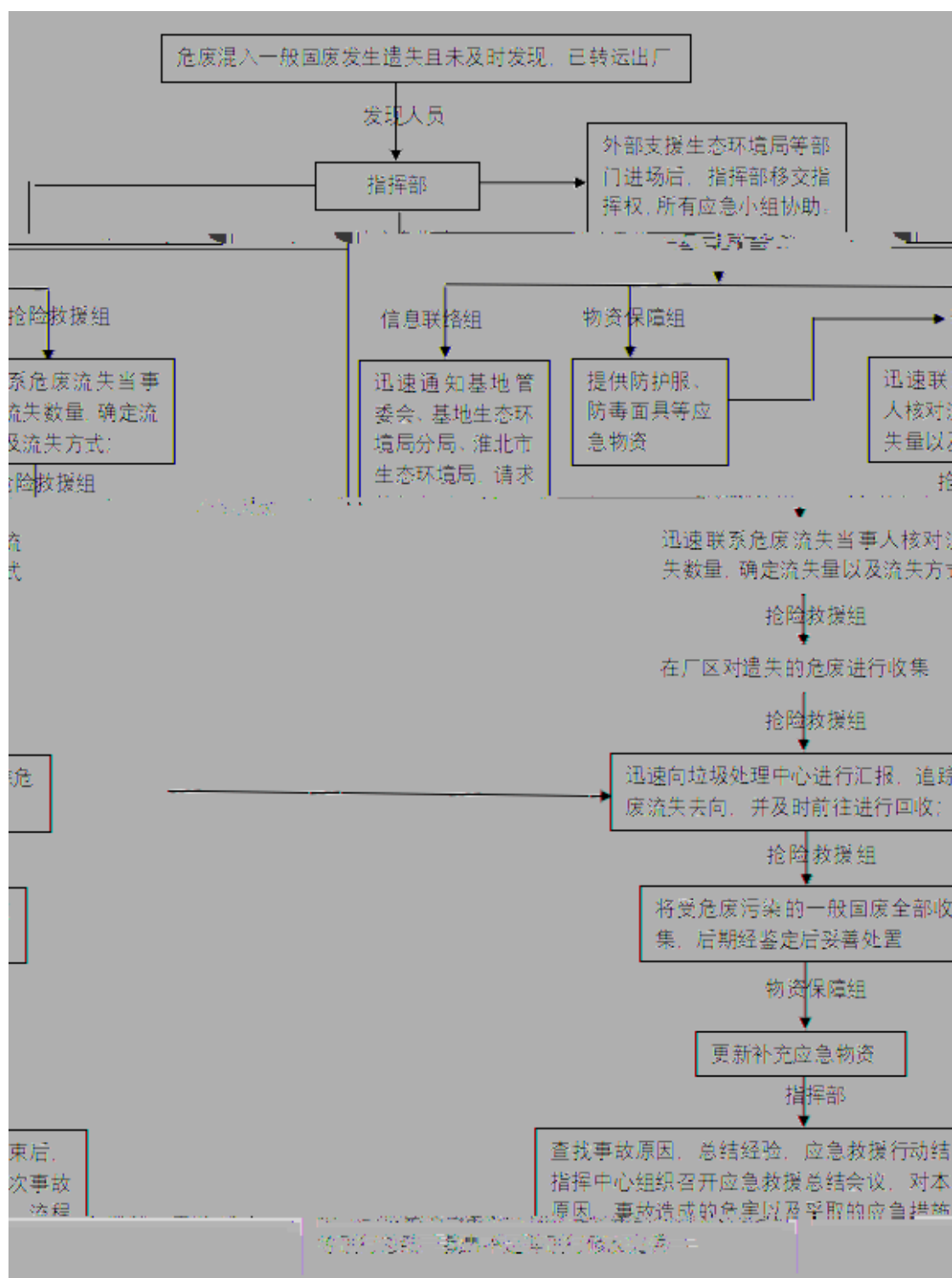
2 I  
1



2.







# 3 4

1 II

II			
		1	
		2	
		3	
		4	
		5	
		6	
		7	
	8		
	9		/
	1		
	2		

2 I

I			
		1	
		2	
		3	
	4		

		5		
		6		
		7		
		8		
		9		
		10		
		11		
		12		
		13	/	
		1		
		2		
		3		
		4		

I			
		1	
		2	
		3	
		4	
		5	
		6	
		7	
		8	
		9	
10	/		

---

	1		
	2		
	3		



30m  
+  
15m  
15m

1 II

VOCs NQ

2 I

VOCs NQ

1

2

3

4

5

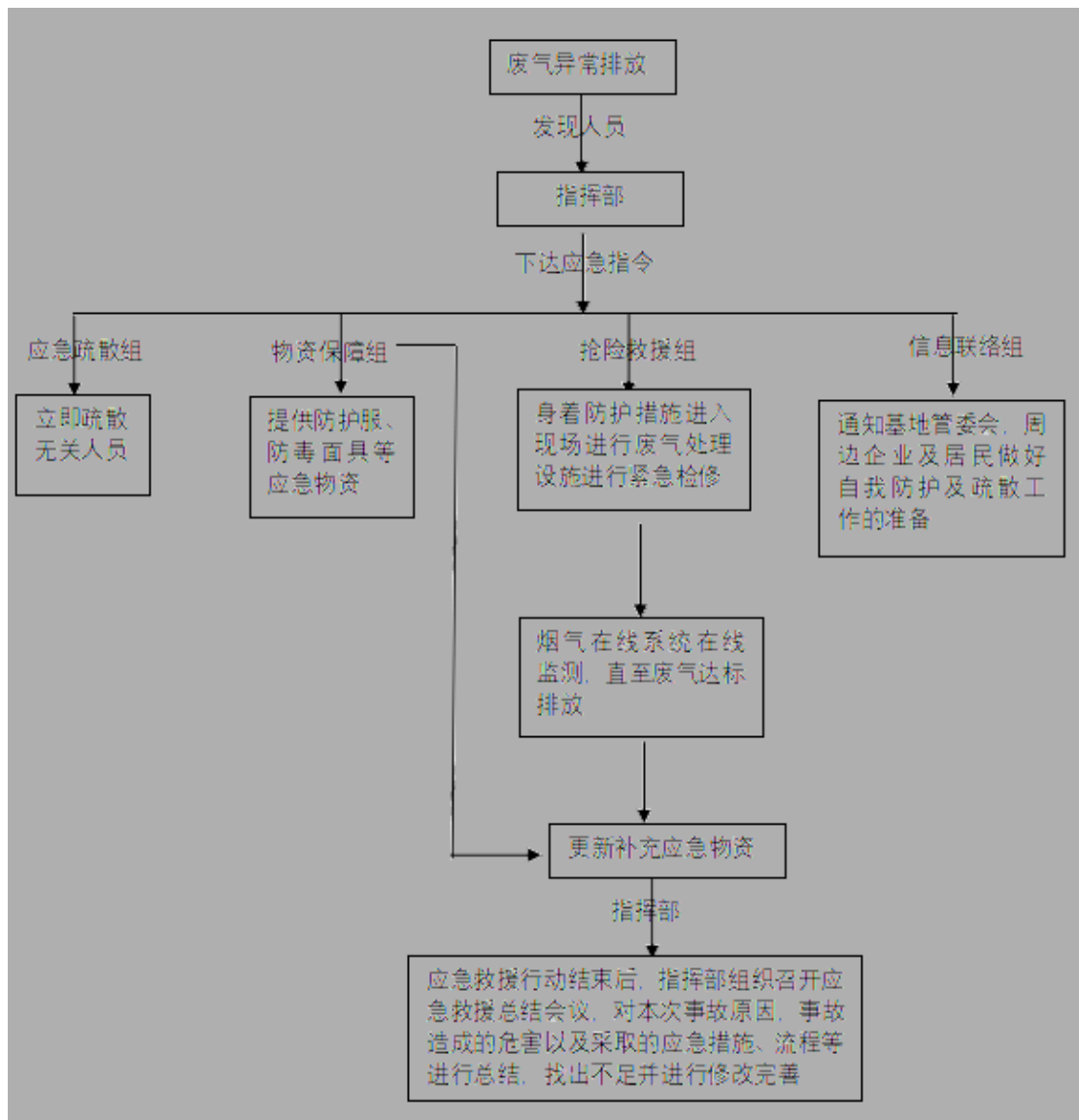
1

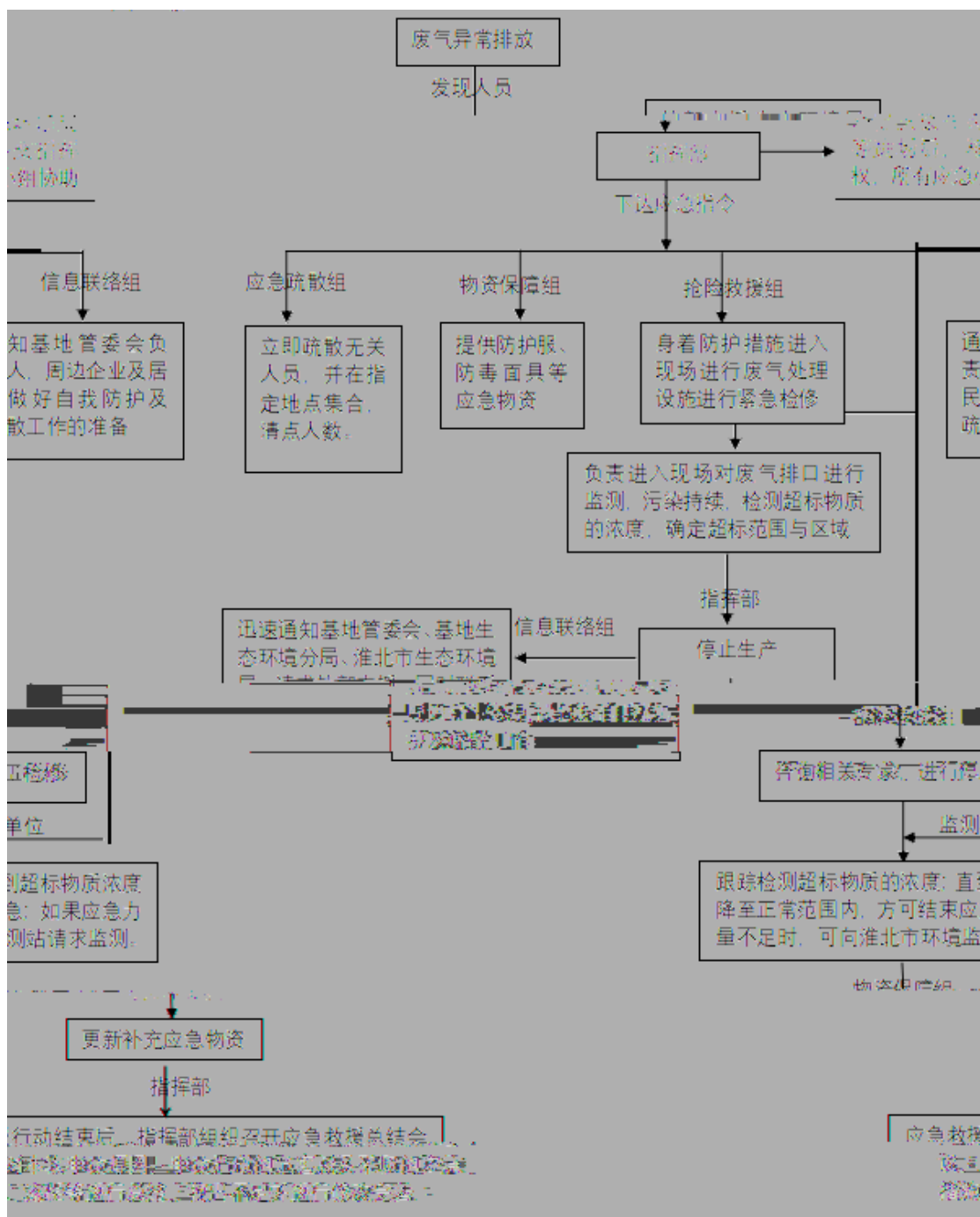
1

⑪

⑫

⑬





II			
		1	
		2	
		3	
		4	
		5	
		6	
7		/	
	1		
	2		
	3		
	4		

2

I			
		1	
		2	
		3	
		4	
		5	
		6	
		7	
8			

		9	
		10	
		11	
		12	/
	1		
	2		
	3		
	4		

---

# 5

1 III

2 II

3 I

1

2

3

1 III

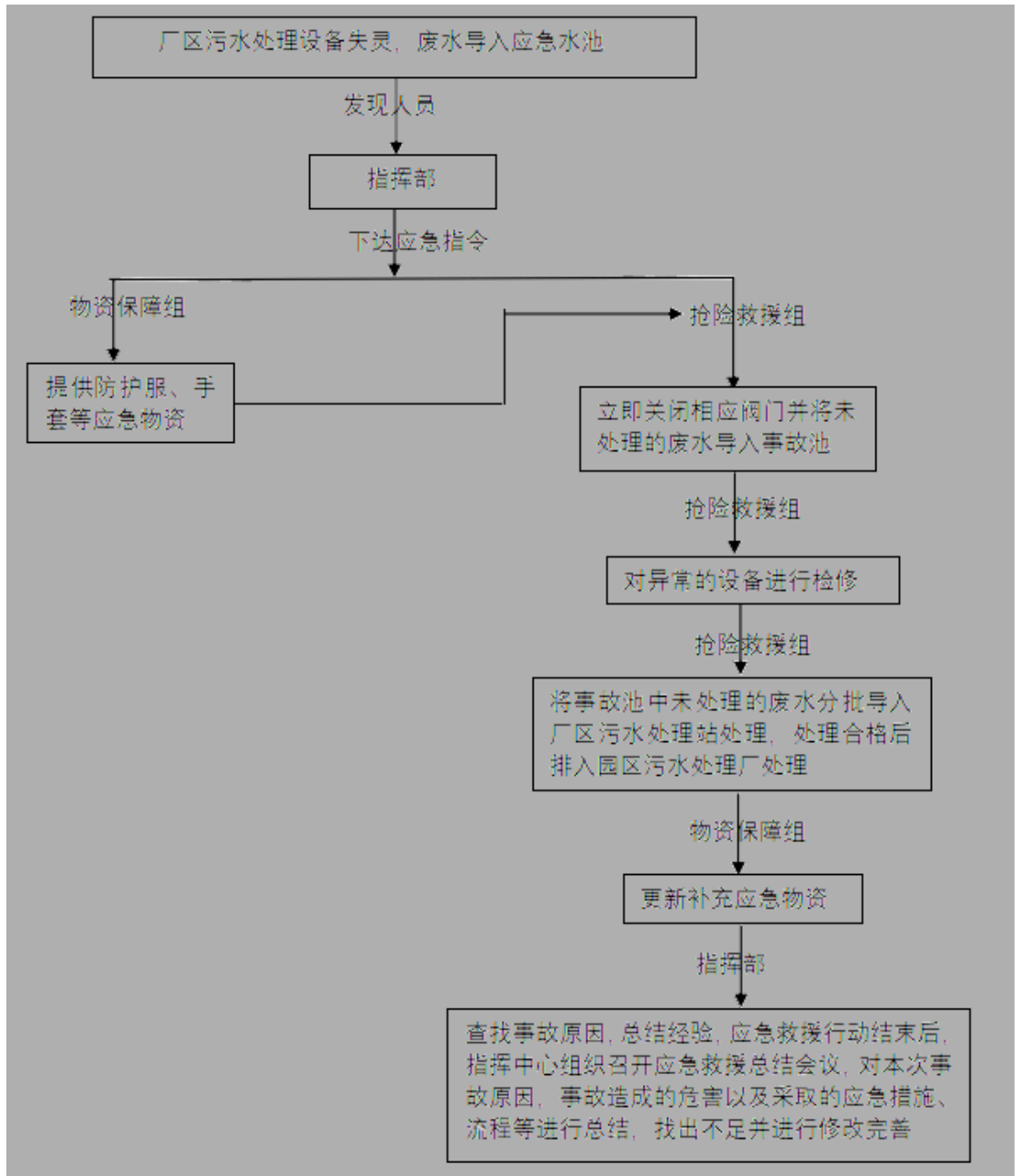
---

2 II

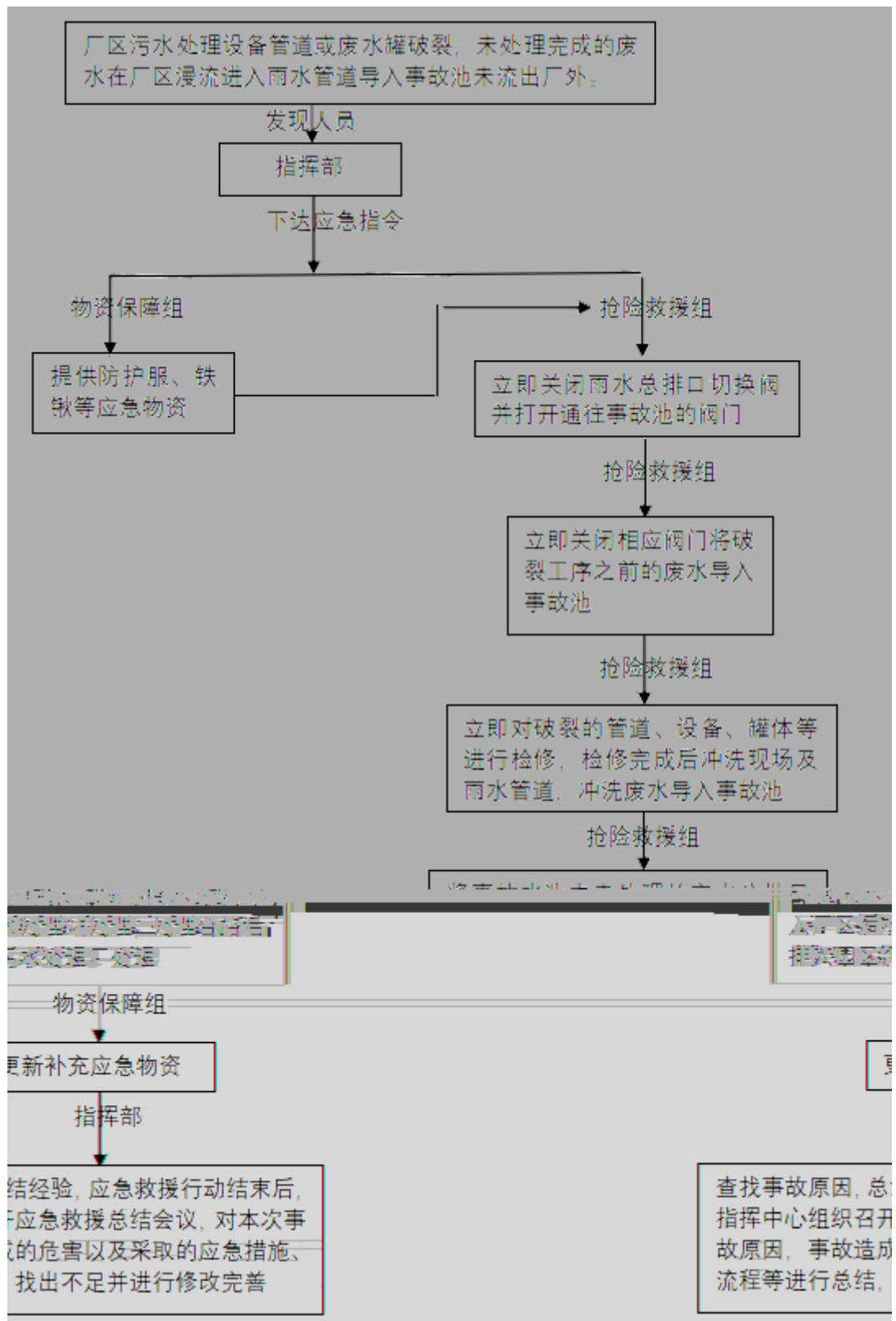
3 I

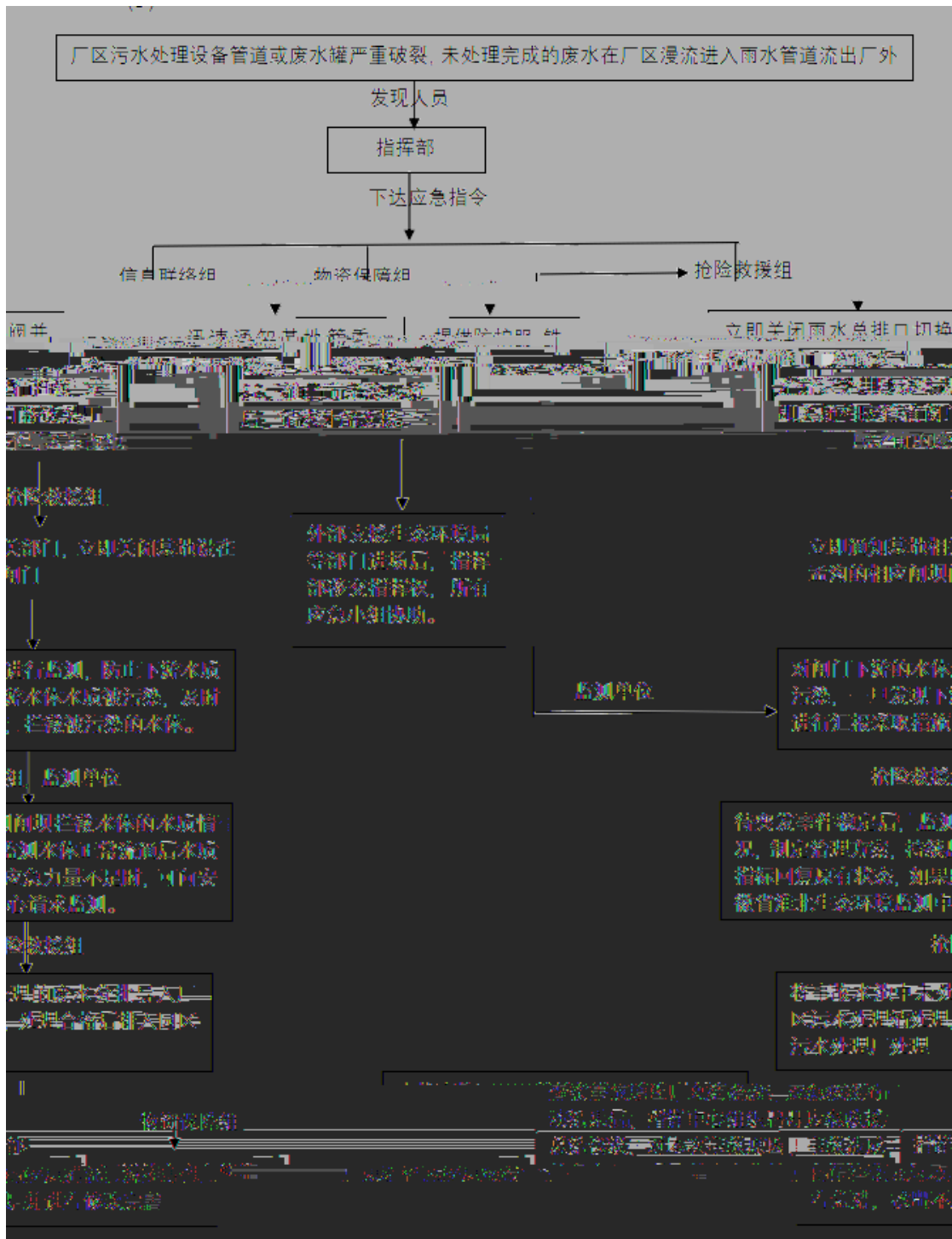
---

(1) III



2 II





---



III

3 I

		1	
		2	
		3	
		4	
		5	
		6	
		7	
		8	
		9	
		10	/
	1		
	2		

---

1 I

1

2

3

4

5

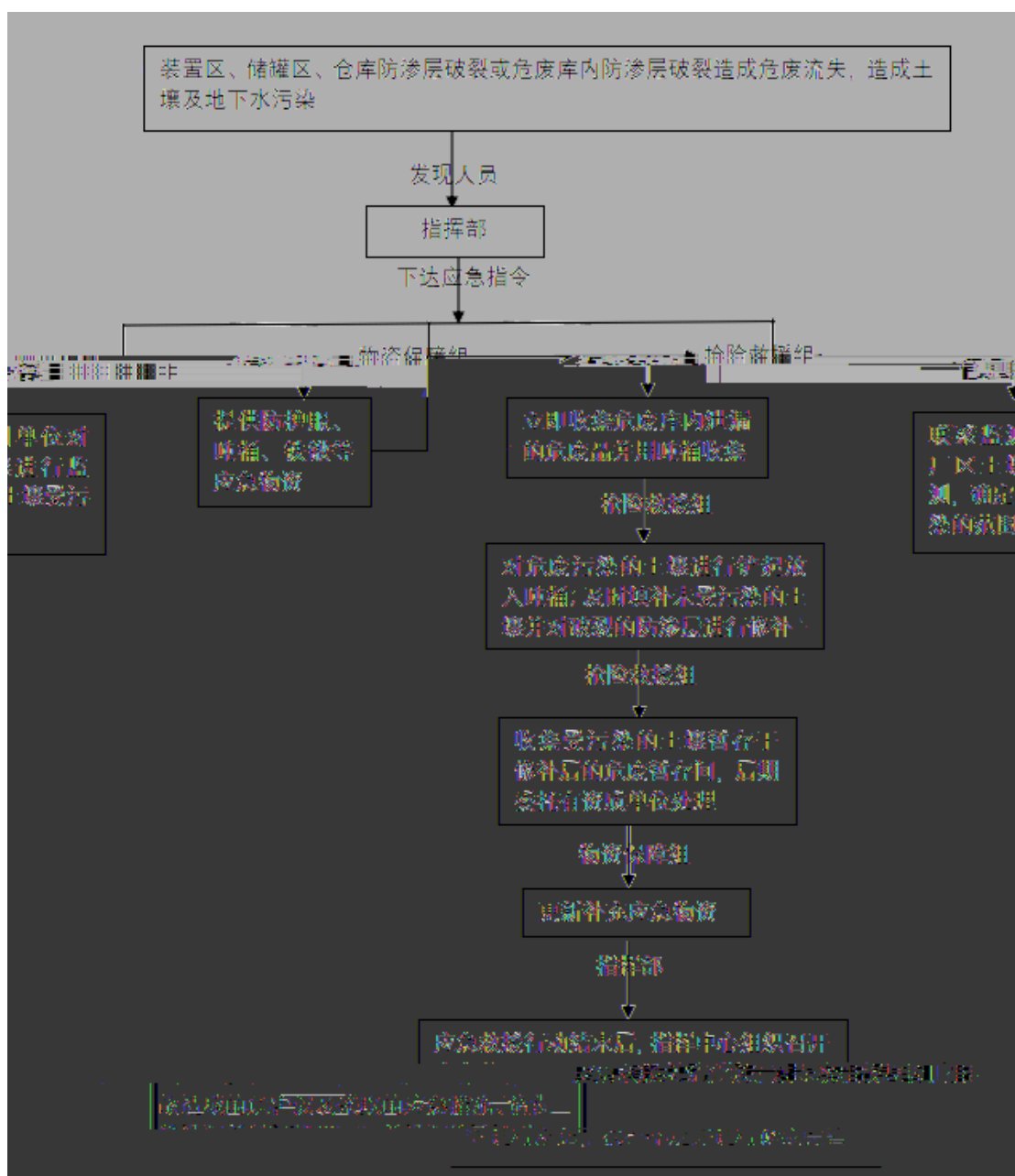
6

7

1 I

---

I



1

	I		
		1	
		2	

		2	
		3	
		4	
		5	
		6	
		7	
		8	
		9	
		10	
		11	/
			1
2			
2			

---

1

2

3

4

5

AQI

6

7

8

9

10

11

1

2

“

”

M



7.6.1

“ ”



---

2

AQI 200 2

AQI 200 3 AQI 300

AQI 200 4 AQI 300

2 AQI 500 1

AQI 200 2

AQI 200 3 AQI

300

AQI 200 4 AQI

300 2 AQI 500 1

“

”

1

---

2            24

3

4

5

6

7

8

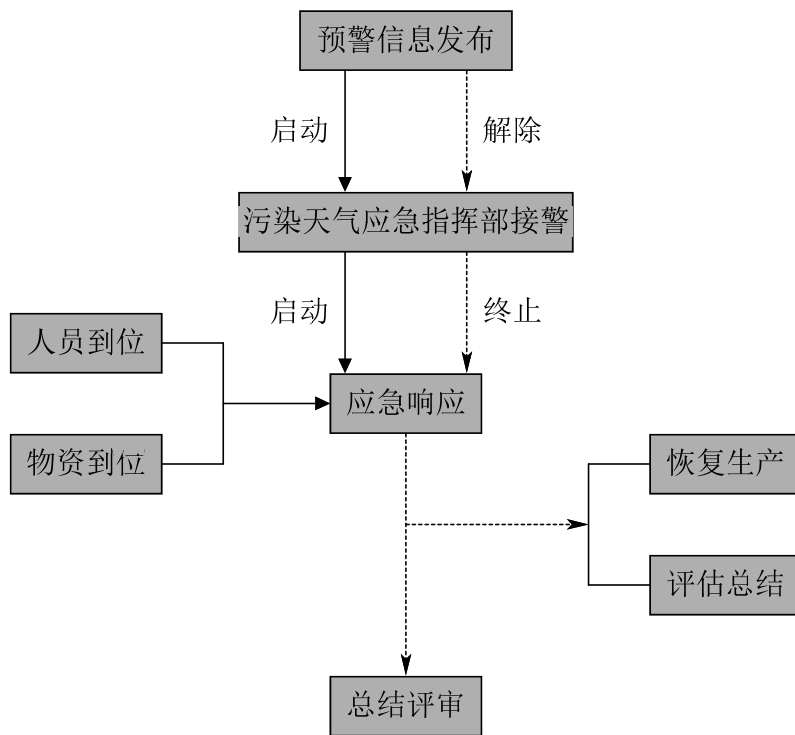
1

2

3

4

7-3



1  
2  
3

15 00

2

---

7.8.5.1

7.8.5.2

1			
2			
3			

1

2

3

---

4

1

2

---

---

1

2

---

8

AQI

AQI

HJ633-2012

AQI

201

5 5

	1 2 3
	1
	2
	3
	4
	5
	6

---

	7
	1
	2

